



# THE BREEZE

VILLAS

THE BREEZE VILLAS Phase I - Phase II

+66(0) 61 263 9793

Email: [info@thebreezevillas.com](mailto:info@thebreezevillas.com)

[www.thebreezevillas.com](http://www.thebreezevillas.com)



# THE BREEZE VILLAS

---

If you are looking for luxury, privacy, privilege and relaxation, all of this and more can be found at The Breeze Villas Phuket.

Most importantly, invest with confidence with the knowledge that our land is wholly owned by the developer in prime location.



THE BREEZE  
VILLAS





MASTER PLAN  
PHASE I

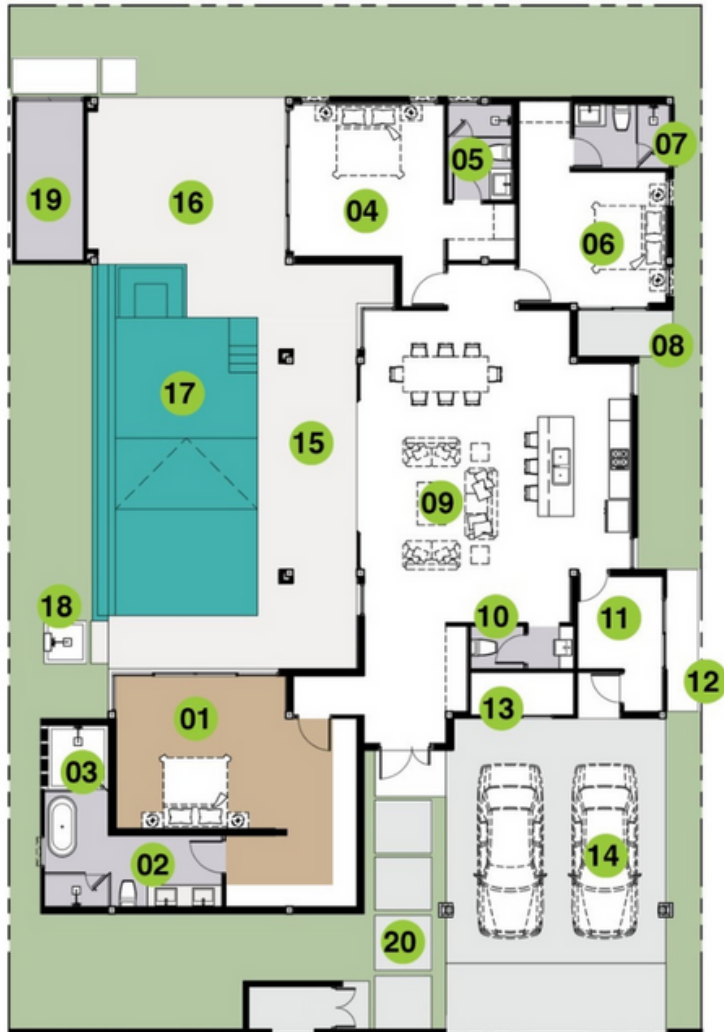


MASTER PLAN  
PHASE II



# FLOOR PLAN

## 3 BEDROOM VILLA



<b>01</b>	Master Bedroom	39.82 sq.m.
<b>02</b>	Master Bathroom	13.91 sq.m.
<b>03</b>	Shower Outdoor Master	3.80 sq.m.
<b>04</b>	Bedroom 2	26.27 sq.m.
<b>05</b>	Bathroom 2	6.00 sq.m.
<b>06</b>	Bedroom 3	20.90 sq.m.
<b>07</b>	Bathroom 3	5.80 sq.m.
<b>08</b>	Terrace 3	3.51 sq.m.
<b>09</b>	Living area + Kitchen	80.65 sq.m.
<b>10</b>	Powder room	4.20 sq.m.
<b>11</b>	Laundry	8.94 sq.m.
<b>12</b>	Laundry Terrace	3.60 sq.m.
<b>13</b>	Storage	3.90 sq.m.
<b>14</b>	Car Park	56.56 sq.m.
<b>15</b>	Pool Terrace	43.06 sq.m.
<b>16</b>	Sala	26.32 sq.m.
<b>17</b>	Swimming Pool	43.03 sq.m.
<b>18</b>	Outdoor Shower	1.44 sq.m.
<b>19</b>	Pump Room	9.87 sq.m.
<b>20</b>	Walk Way	18.44 sq.m.

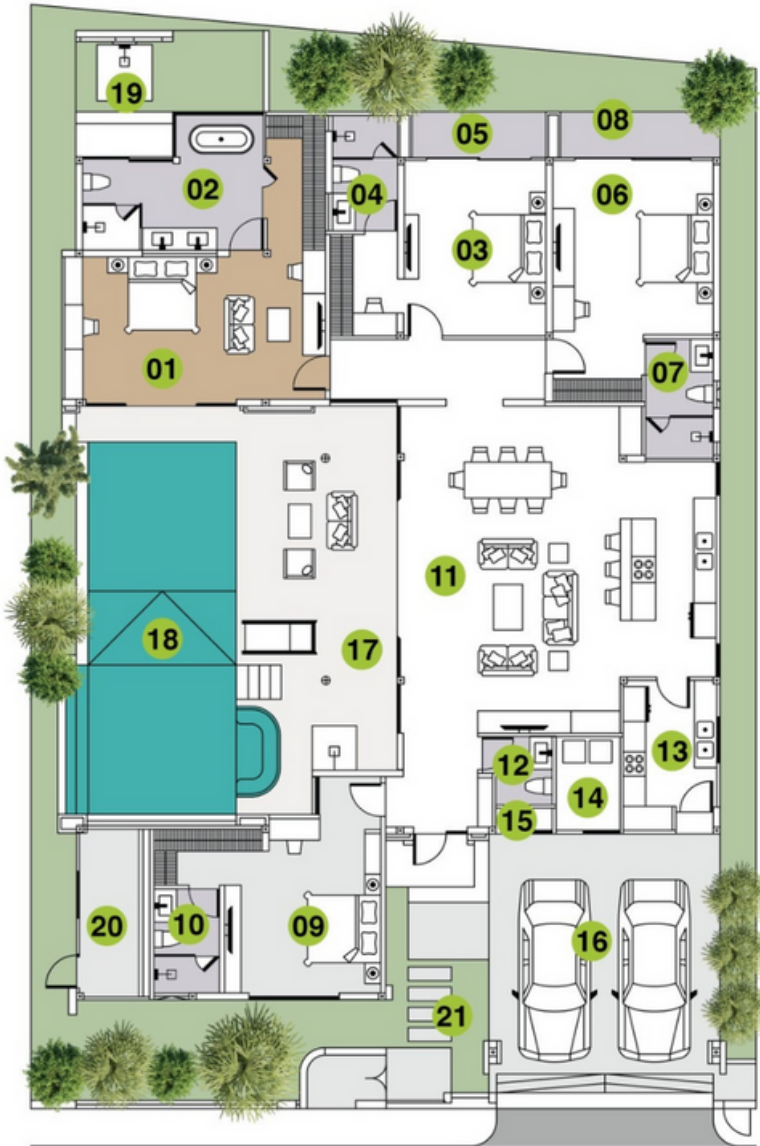
Internal Area 220.26 sq.m.

External Area 199.76 sq.m.

Total Area 420.02 sq.m.

# FLOOR PLAN

## 4 BEDROOM VILLA



Internal Area            268.10 sq.m.  
External Area            164.23 sq.m.

<b>01</b>	Master Bedroom	36.90 sq.m.
<b>02</b>	Master Bathroom	15.40 sq.m.
<b>03</b>	Bedroom 2	23.95 sq.m.
<b>04</b>	Bathroom 2	6.40 sq.m.
<b>05</b>	Terrace 2	4.70 sq.m.
<b>06</b>	Bedroom 3	27.70 sq.m.
<b>07</b>	Bathroom 3	6.95 sq.m.
<b>08</b>	Terrace 3	5.50 sq.m.
<b>09</b>	Bedroom 4	26.75 sq.m.
<b>10</b>	Bathroom 4	6.20 sq.m.
<b>11</b>	Living area + Kitchen	87.60 sq.m.
<b>12</b>	Powder room	3.60 sq.m.
<b>13</b>	Multipurpose Room	11.35 sq.m.
<b>14</b>	Laundry	4.60 sq.m.
<b>15</b>	Storage	1.30 sq.m.
<b>16</b>	Car Park	45.90 sq.m.
<b>17</b>	Pool Terrace	44.70 sq.m.
<b>18</b>	Swimming Pool	49.03 sq.m.
<b>19</b>	Outdoor Shower	5.70 sq.m.
<b>20</b>	Pump Room	9.40 sq.m.
<b>21</b>	Walk Way	8.70 sq.m.

Total Area                            432.33 sq.m.



**THE BREEZE**  
VILLAS

THE BREEZE VILLAS K1-K2

+66(0) 61 263 9793

Email: [info@thebreezevillas.com](mailto:info@thebreezevillas.com)

[www.thebreezevillas.com](http://www.thebreezevillas.com)



# THE BREEZE VILLAS





THE BREEZE  
VILLAS



LIVING AND DINING AREA



LIVING AND DINING AREA



THE BREEZE  
VILLAS



MASTER BATHROOM



MASTER BEDROOM



WALK IN CLOSET  
MASTER BEDROOM



THE BREEZE  
VILLAS



BEDROOM 2



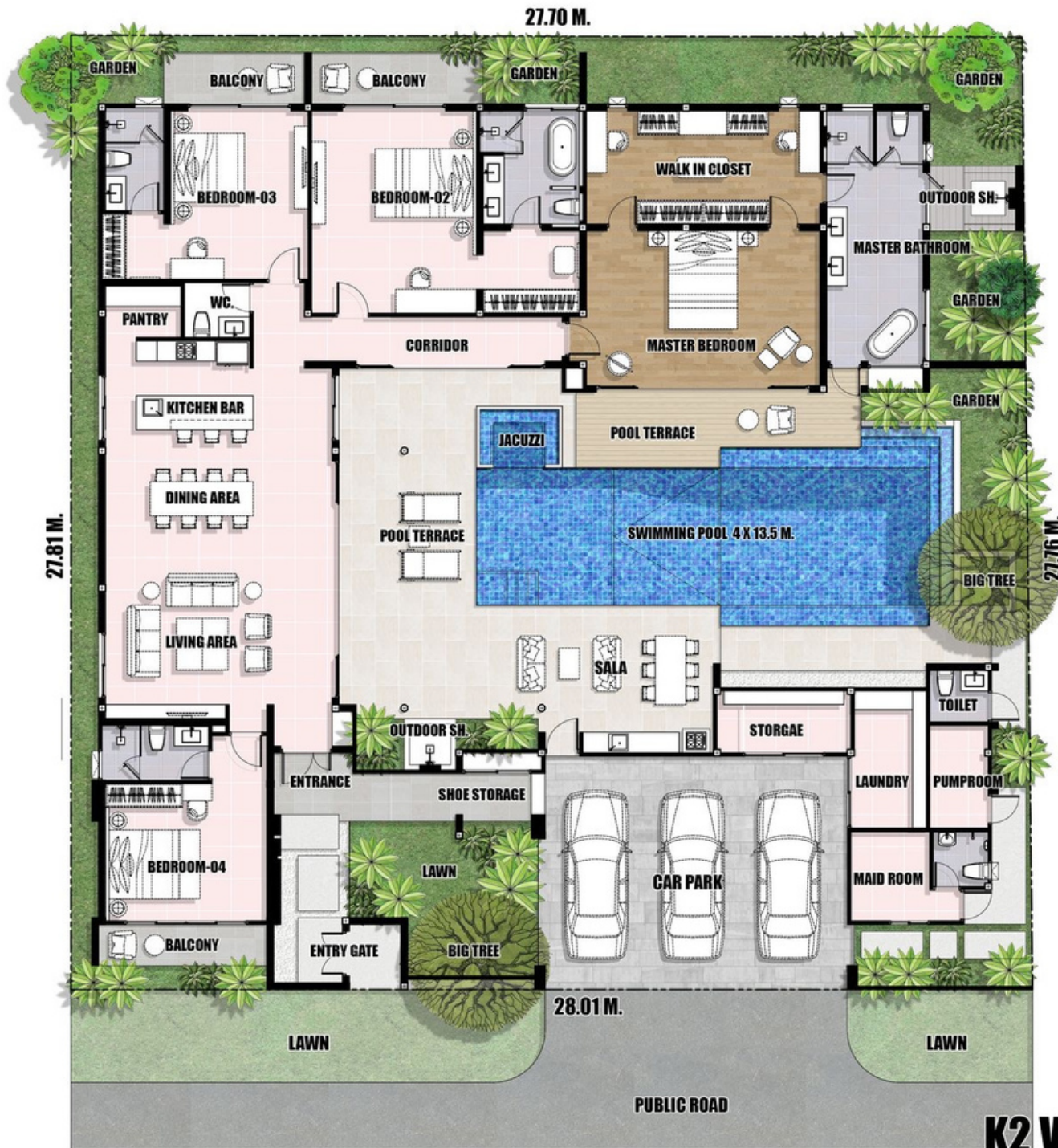
BEDROOM 3



BEDROOM 4



WALK IN CLOSET  
MASTER BEDROOM



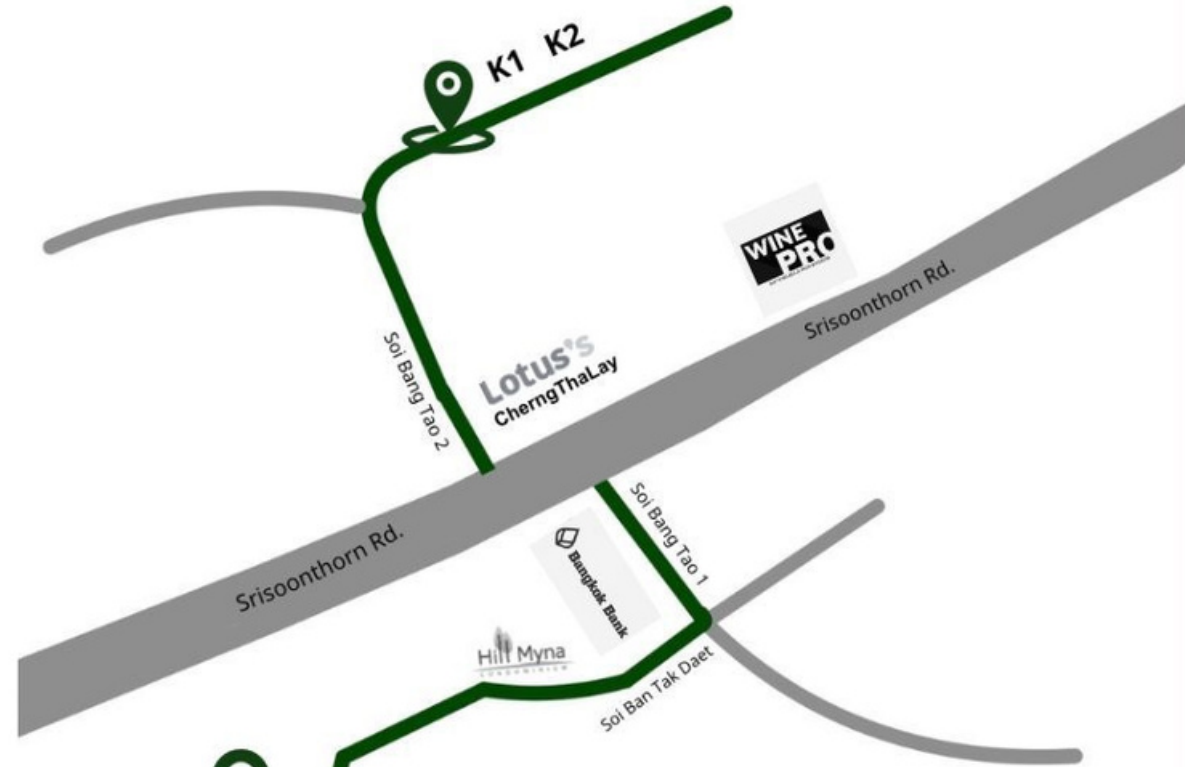
**BUILDING AREA 636.46 SQ.M**

**SITE AREA 774.00 SQ.M**

**K2 VILLA - FLOOR PLAN**



# THE BREEZE VILLAS



## THE BREEZE VILLAS



# NEARBY



Porto De Phuket	0.9 KM.
Villa Market	1.0 KM.
Bang Tao Beach	1.5 KM.
Catch Beach Club	1.5 KM.
Laguna Golf Club	2.5 KM.
British International School	15.0 KM.



**HIGHLY COMMENDED**

**Best Housing Interior Design**

The Breeze Villas by  
THAMDEE 2020 CO.,Ltd

---

**Best Breakthrough Developer**

THAMDEE 2020 CO.,Ltd



# THE BREEZE

## VILLAS

### CONTACT INFO

123/20 Moo.5 Choeng Thale,Thalang,Phuket83110

☎ +66(0) 76 608 811

📱 +66(0) 61 263 9793

info@thebreezevillas.com

### SALES OFFICE

Monday-Friday : 9AM. - 6AM.

Saturday : 9AM. - 12.00 AM.

[www.thebreezevillas.com](http://www.thebreezevillas.com)

